



2 PC DMF15 Direct Connect

Size Range:

1/2" to 2"
C/F for sizes 2 1/2" to 4"

Pressure Rating:

275 PSI MAWP/WOG

Temperature Range:

-20° F to 400° F

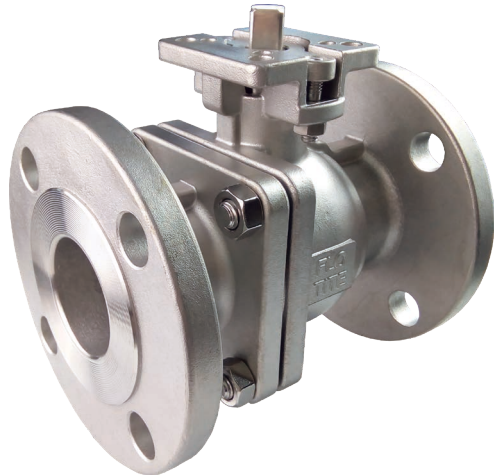
Valve Features

- Two-Piece Body, Full Port Design
- ANSI Class 150 Flanged Ends
- Body: CF8M, 316SS
- Seats: PTFE, RTFE or TFM



Design Advantages

- ISO 5211 Direct Mounting Pad
Provides for precise shaft alignment & eliminates the need for brackets and coupler.
- Live-Loaded Stem Assembly extends cycle life
- Blow-out Proof Stem
- Low Torque Design
- Investment Cast 316SS
- MTR Available, Consult Factory
- 100% Air Tested Under Water @ 100 PSI



DMF15 Series

STANDARD PRODUCT NUMBER
DMF15-SS-TTT-L

Models:

#DMF15-SS

Model: DM-F15

Actuator Sizing Chart

Flo-Tite Actuator Selections are based on units with standard seats with clean fluid only at ambient temperature.

Maximum temperature limitations for Direct-Mount Actuators: Electric 150° F; Pneumatic 180° F.

Special Brackets are available for higher temperatures, consult factory.

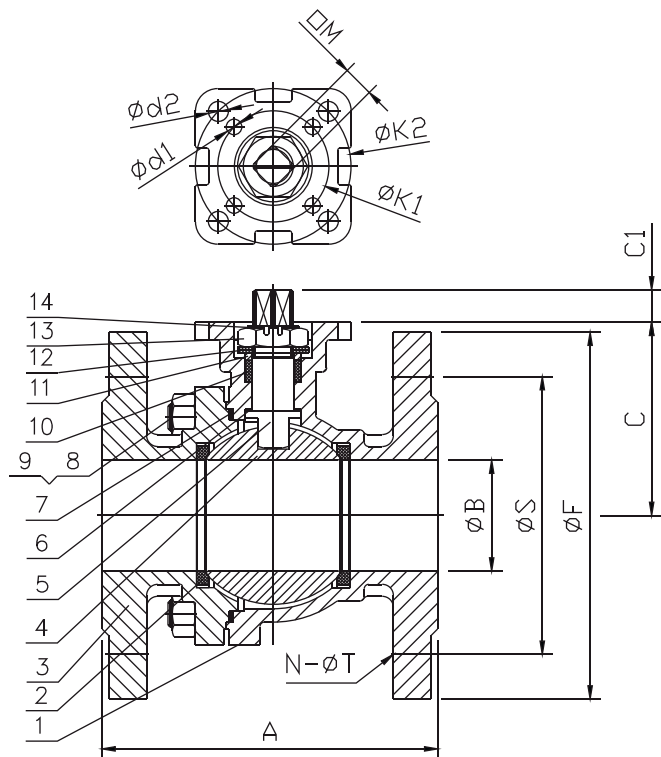
All valves are sized for line pressure up to maximum 800 WOG.

For higher line pressure applications, consult factory to assure proper actuator sizing.



Size	A	B	C	ISO	Actuator	ISO	F	H	J	L	Actuator	ISO	F	H	J	L
					Spring Return Actuator @80psi						Spring Return Actuator @60psi					
1/2"	4.25	0.59	2.17	F03/F04	SR52.12	F05/F07	5.79	5.79	3.62	2.81	SR52.9	F05/F07	5.79	5.79	3.62	2.81
3/4"	4.62	0.79	2.17	F03/F04	SR52.12	F05/F07	5.79	5.79	3.62	2.81	SR52.8	F05/F07	5.79	5.79	3.62	2.81
1"	5.00	0.98	2.36	F04/F05	SR63.12	F05/F07	6.59	6.61	4.23	3.27	SR75.8	F05/F07	7.06	7.24	4.70	4.05
1 1/2"	6.50	1.50	2.95	F05/F07	SR75.12	F05/F07	7.65	7.24	4.70	4.05	SR83.8	F05/F07	8.02	8.03	5.07	4.05
2"	7.00	1.97	3.27	F05/F07	SR83.12	F05/F07	8.35	8.03	5.08	4.42	SR92.8	F07/F10	8.66	10.31	5.39	4.27
					Double Acting Actuator @80psi						Double Acting Actuator @60psi					
1/2"	4.25	0.59	2.17	F03/F04	DA40	F03/F05	5.32	4.81	3.15	2.57	DA40	F03/F05	5.32	4.81	3.15	2.57
3/4"	4.62	0.79	2.17	F03/F04	DA52	F03/F05	5.79	5.79	3.62	2.81	DA52	F03/F05	5.79	5.79	3.62	2.81
1"	5.00	0.98	2.36	F04/F05	DA52	F03/F05	5.98	5.79	3.62	2.81	DA52	F03/F05	5.98	5.79	3.62	2.81
1 1/2"	6.50	1.50	2.95	F05/F07	DA63	F05/F07	7.20	6.61	4.25	3.35	DA63	F05/F07	7.2	6.61	4.25	3.35
2"	7.00	1.97	3.27	F05/F07	DA75	F05/F07	7.97	7.24	4.70	3.74	DA75	F05/F07	7.97	7.24	4.70	4.05

Design and Technical Data



Optional: Lever Handle for Manual Operation.
Consult Factory

Materials of Construction

No.	Parts	Material	Qty
1	Body	ASTM A351 CF8M	1
2	Seats	# PTFE	2
3	End Cap	ASTM A351 CF8M	1
4	Ball	CF8M - SS316	1
5	Stem	SS316	1
6	Thrust Washer	# PTFE	1
7	Gaskets	# PTFE	1
8	Studs	SS304	4
9	Nuts	SS304	4
10	Packing	PTFE	1
11	Packing Follower	SS304	1
12	Belleville Washers	SS304	2
13	Nut	SS304	1
14	Lock Washer	SS301	1

Optional Body Materials Available, Consult Factory
Repair Kits

Dimensions and Weights

Size	A	B	C	C1	d1	d2	F	K1	K2	N	S	T	M	Cv	Torque In-Lb	ISO 5211 Pattern	Weight Lb
½"	4.25	0.59	2.17	0.31	0.24	0.24	3.50	1.42	1.65	4	2.38	0.62	0.354	17	27	F03/F04	3.5
¾"	4.62	0.79	2.17	0.31	0.24	0.24	3.88	1.42	1.65	4	2.75	0.62	0.354	43	44	F03/F04	4.9
1"	5.00	0.98	2.36	0.51	0.24	0.28	4.25	1.65	1.97	4	3.12	0.62	0.433	74	97	F04/F05	6.0
1¼"	5.50	1.26	2.56	0.51	0.24	0.28	4.62	1.65	1.97	4	3.50	0.62	0.433	192	124	F04/F05	8.4
1½"	6.50	1.50	2.95	0.57	0.28	0.35	5.00	1.97	2.76	4	3.88	0.62	0.551	290	142	F05/F07	12.3
2"	7.00	1.97	3.27	0.57	0.28	0.35	6.00	1.97	2.76	4	4.75	0.75	0.551	410	221	F05/F07	15.0

Note: All torque figures are full pressure rated

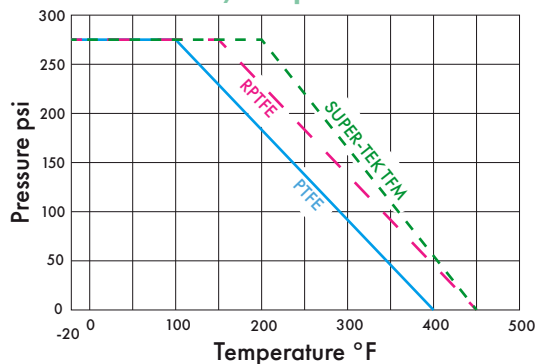
ATTENTION
CWP/MAWP is a **do not exceed** pressure at normal ambient NPT & Weld End Models

Seating Performance

Seating provides for excellent service at elevated temperatures while providing low-operating valve torque.

Consult factory for details.

Pressure/Temperature Chart



4815 West 5th Street
Lumberton NC, 28358

www.flotite.com

Office: 910.738.8904
Fax: 910.738.9112
sales@flotite.com