

600 CLASS CS BODY 2 PC FP TRUNNION BALL VALVE GEAR OPERATOR



TECHNICAL SPECIFICATION

- BLOW-OUT-PROOF STEM DESIGN
- VALVE DESIGN TO PER API 6D
- PRESSURE-TEMPERATURE TO PER ASME B16.34 RATINGS
- FACE TO FACE TO PER ASME B16.10
- FLANGE DIMENSIONS TO PER ASME B16.5
- SPLIT BODY TO PER BS5351
- LOCKING HANDLE WITH LEVER OR GO
- IN COMPLIANCE WITH NACE MR-0175
- ANTISTATIC GROUNDING BETWEEN BALL, STEM & BODY
- FIRE TESTED TO PER API 6FA
- EMERGENCY SEAT SEALANT INJECTION STANDARD ON 6" & LARGER
- DOUBLE BLOCK & BLEED
- 8" & LARGER ARE EQUIPPED WITH LIFTING LUGS

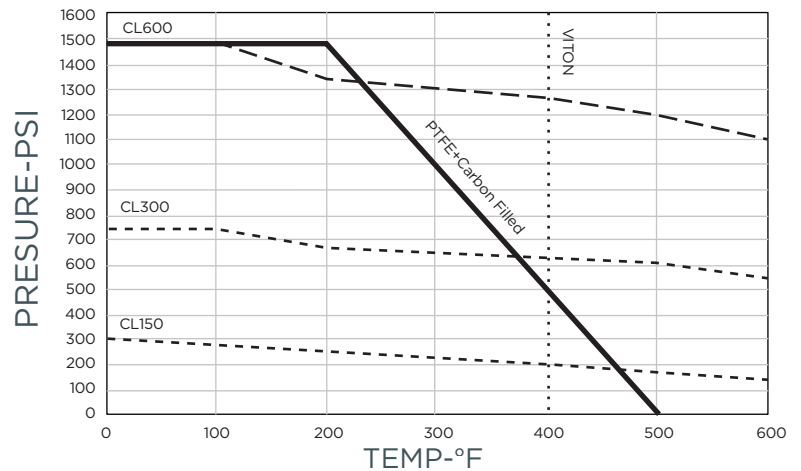
FEATURES

SIZE:	2" - 10"
PORT:	FULL
CLASS:	600
TEMPERATURE:	-49 TO 500 F°
CONNECTION:	FLANGED RF

TEST SPECIFICATION

TEST ACCORDANCE TO PER API 598
NOMINAL PRESSURE: 1480 PSI
SHELL TEST (WATER): 2225 PSI
SEAT TEST (WATER): 1630 PSI
AIR TEST: 80.80 PSI

PRESSURE TEMPERATURE RATINGS



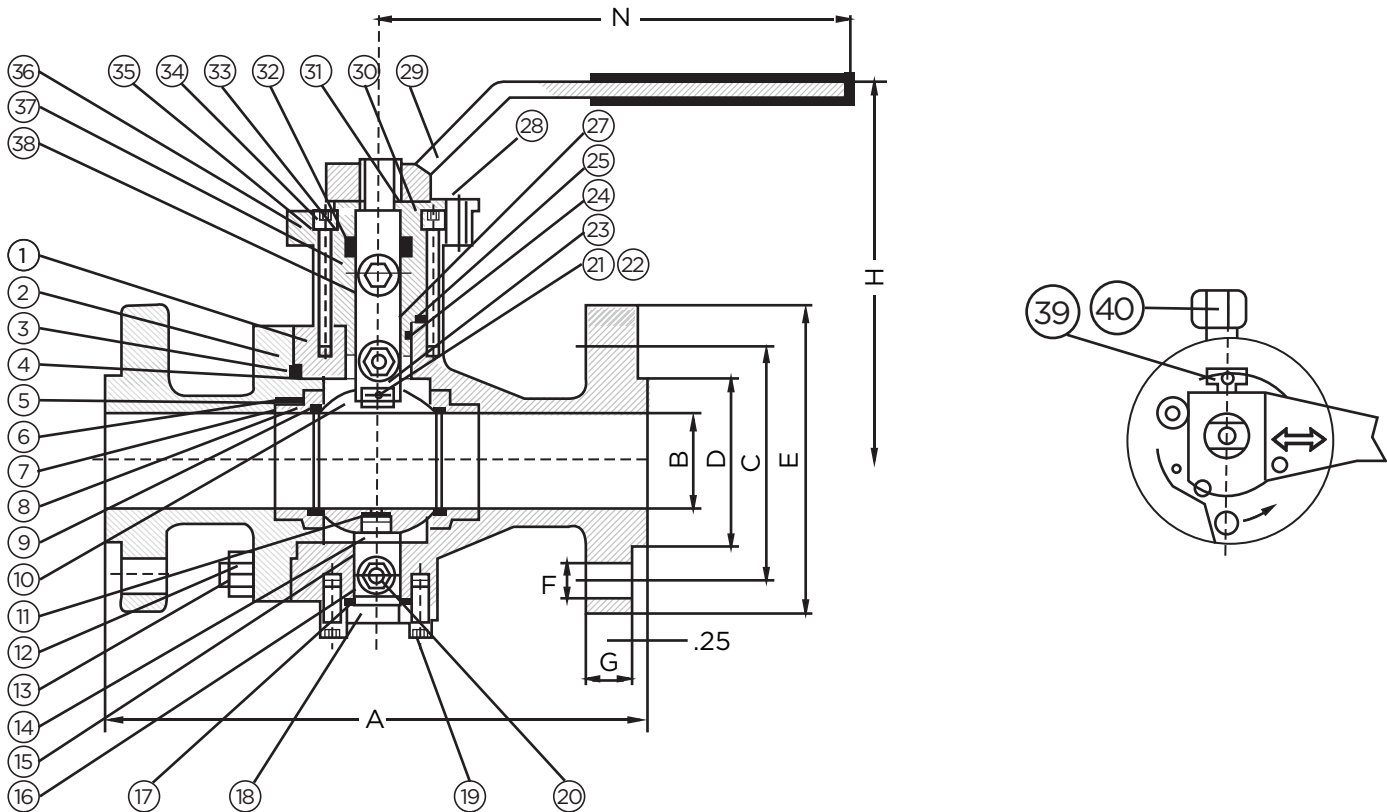
ADDITIONAL SPECIFICATION - TRUNNION BALL VALVES

STANDARD DESIGN FEATURES:

- BODY CONSTRUCTION: 2 PIECE BOLTED BODY DESIGN AS PER API 6D, API 608 & ASME B 16.34 - FACE TO FACE DIMENSION: ASME B16.10 & API 6D. -
- FLANGED ENDS: ASME B16.5
- ANTI BLOW-OUT STEM DESIGN. - THE STEM FEATURES TRIPLE BARRIER SEALS TO ISOLATE THE STEM FROM LINE PRESSURE AND TO SEAL FROM THE ATMOSPHERE.
- LOW FRICTION METAL-BACKED SELF LUBRICATING PTFE SLEEVE BEARINGS AND THRUST WASHERS TO REDUCE TORQUE AND EXTEND SERVICE LIFE.
- PRIMARY METAL TO METAL AND SECONDARY SOFT CPTFE.
- DOUBLE BARRIER SEALING IN BOTH DIRECTIONS. - THE UPSTREAM SEAT (1) BECOMES DAMAGED AND LEAKS, PRESSURES ENTERING THE BODY CAVITY ACT ON THE DOWNSTREAM SEAT (2) SEALING THE DOWNSTREAM SEAT TIGHTLY AGAINST THE BALL.
- BLOCK AND BLEED: CAVITY RELIEF VALVE FOR OVER-PRESSURE DUE TO LIQUID THERMAL EXPANSION.
- STEM AND SEAT SEALANT INJECTION SYSTEM. - WHEN THE SEALING MATERIALS (SEAT SEALING OR STEM O-RING) ARE DAMAGED OR DECOMPOSED BY FIRE OR OTHER ACCIDENTAL CAUSES, LEAKAGE FROM THE SEAT AND STEM CAN BE PREVENTED BY INJECTION OF SEALANT INTO THESE FITTINGS.

MATERIAL LIST

1	BODY	ASTM A-216 Gr. WCB	21	ANTISTATIC STEEL BALL	SS304
2	ADAPTER CAP	ASTM A-216 Gr. WCB	22	ANTISTATIC SPRING	SS304
3	GASKET BODY	SS304+GRAPHITE	23	STEM	ASTM A-276 Gr. 316
4	O-RING BODY	VITON	24	BLEED VALVE	ASTM A-105
5	SPRING	GRAPHITE	25	O-RING	VITON
6	O-RING SEAT	VITON	26	GASKET CAP	SS 304+GRAPHITE
7	SPRING	17-7PH	27	GASKET	PTFE+CARBON FIBER
8	SEAT RING	ASTM A-182 Gr. F316	28	SEAL INJECTION FITTING	ASTM A-105
9	SEAT ASSEMBLY	PTFE+CARBON FIBER	29	HANDLE	DUCTILE IRON
10	BALL	ASTM A-276 Gr. F316	30	STOP PLATE	CARBON STEEL
11	GASKET	PTFE+CARBON FIBER	31	SNAP RING	AISI 1065
12	NUT BODY	ASTM A-194 Gr. 2H	32	GLAND FLANGE	ASTM A-276 Gr. 420
13	STUD BODY	ASTM A-193 Gr. B7	33	GLAND PACKING	GRAPHITE
14	TRUNNION	ASTM A-276 Gr. 316	34	CAP SCREW	ASTM A-193 Gr. B7
15	TRUNNION BEARING	SS 304+PTFE	35	SPRING WASHER	AISI 1065
16	O-RING TRUNNION	VITON	36	ANSCHLUSSPLATTE	ASTM A-105
17	GASKET TRUNNION	SS 304+GRAPHITE	37	TOP COVER	ASTM A-105+Ni
18	TRUNNION PLATE	AISI 1045+Ni	38	O-RING	VITON
19	LOWER CAP SCREW	ASTM A-193 Gr. B7	39	HEXAGON BOLTS	AISI 1035+Zn
20	BODY VENT VALVE	ASTM A-195		CAP SCREW	AISI 1035

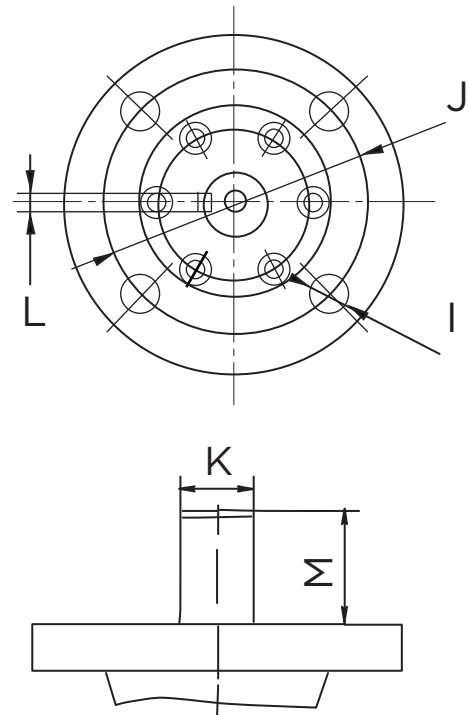
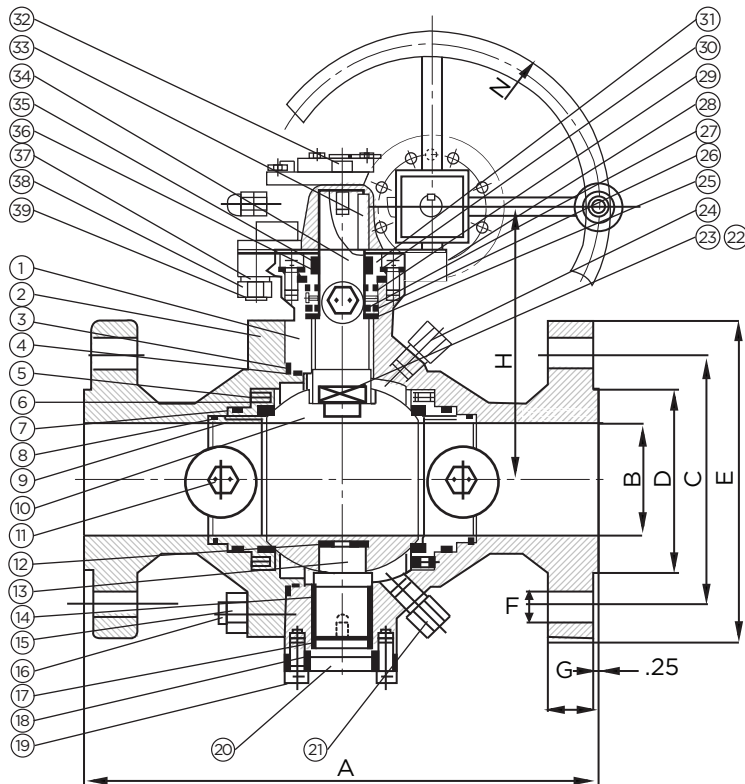


DIMENSIONS, WEIGHT & TORQUE

MODEL	SIZE	A	B	C	D	E	F	G	H	TORQUE (FT.LB)	WEIGHT (KG)
5612FT-09	2"	11.50	1.97	5.00	3.62	6.50	8-0.75	1.00	8.18	236.00	109.60
5612FT-11	3"	14.00	2.99	6.63	5.00	8.27	8-0.87	1.26	9.48	664.00	218.19

MATERIAL LIST

1	BODY	ASTM A-216 Gr. WCB	21	BODY VENT VALVE	ASTM A-105
2	ADAPTER CAP	ASTM A-216 Gr. WCB	22	ANTISTATIC STEEL BALL	SS304
3	GASKET BODY	SS304+GRAPHITE	23	ANTISTATIC SPRING	SS304
4	O-RING BODY	VITON	24	DRAIN FITTING VALVE	ASTM A-105
5	SPRING	17-7PH	25	GASKET	PTFE+CARBON FILLER
6	SEAT RING	ASTM A-182 Gr. 316	26	GLAND PLATE O-RING	VITON
7	O-RING SEAT	VITON	27	O-RING STEM	VITON
8	SEAT FIRE SAFE	GRAPHITE	28	UPPER COVER	AISI 1045
9	SEAT ASSEMBLY	PTFE+CARBON FILLER	29	GASKET BODY	SS304+GRAPHITE
10	BALL	ASTM A-276 Gr. 316	30	SPRING WASHER	AISI 1065
11	GREASE VALVE	ASTM A-105	31	CAP SCREW	ASMT A-193 Gr. B7
12	GASKET	PTFE+CARBON FILLER	32	GEAR OPERATOR	CAST IRON CASE
13	TRUNNION <i>Texto</i>	ASTM A-276 Gr. 316	33	STEM KEY	AISI 1045
14	TRUNNION BEARING	SS304+PTFE	34	UPPER STEM	ASTM A-276 Gr. 316
15	NUT	ASTM A-194 Gr. 2H	35	GLAND FLANGE	SS410
16	STUD	ASTM A-193 Gr- B7	36	GLAND PACKING	GRAPHITE
17	O-RING TRUNNION	VITON	37	SPRING WASHER	AISI 1065
18	GASKET TRUNNION	SS304+GRAPHITE	38	NUT	ASTM A-194 Gr. 2H
19	CAP SCREW	ASTM A-193 Gr- B7	39	STUD	ASTM A-193 Gr. B7
20	TRUNNION PLATE	AISI 1045			



DIMENSIONS, WEIGHT & TORQUE

MODEL	SIZE	A	B	C	D	E	F	G	H	I	J	K	L	M	N	TORQUE (FT.LB)	WEIGHT (KG)
5612FT-12	4"	17.00	3.94	8.50	6.18	10.75	8-1.02	1.50	9.24	4-0.71	5.51	1.50	0.47	2.14	12.60	236.00	109.60
5612FT-14	6"	22.00	5.91	11.50	8.50	14.00	12-1.14	1.88	12.00	4-0.91	6.50	1.77	0.55	2.71	18.00	664.00	218.19
5612FT-15	8"	26.00	7.91	13.75	10.63	16.50	12-1.25	2.19	13.39	8-0.71	8.86	2.17	0.63	2.72	17.99	1300.00	370.00
5612FT-16	10"	31.00	10.00	17.01	12.76	20.00	16-1.38	2.56	16.97	8-0.71	10.00	2.56	0.79	3.13	31.50	1790.00	615.17
5612FT-17	12"	33.00	12.01	19.25	15.00	22.01	20-1.38	2.63	17.99	8-0.71	10.00	2.76	0.79	3.13	31.50	2425.00	1100.95

*DIMENSIONS ARE EXPRESSED IN INCHES