

150 CLASS CARBON STEEL BODY 2 PC FP FLOATING BALL VALVE LEVER OPERATOR



FEATURES

SIZE:	1" - 10"
PORT:	FULL
CLASS:	150
TEMPERATURE:	- 49 TO 450 F°
CONNECTION:	FLANGED RF

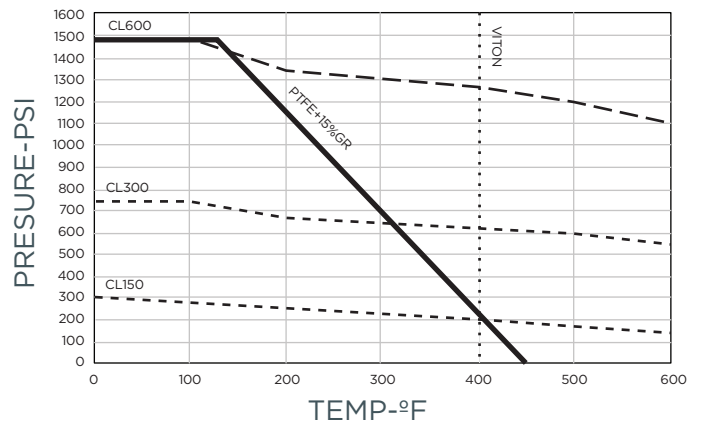
TEST SPECIFICATION

TEST ACCORDANCE TO PER	API 598
NOMINAL PRESSURE:	285 PSI
SHELL TEST (WATER):	450 PSI
SEAT TEST (WATER):	315 PSI
AIR TEST:	80.80 PSI

TECHNICAL SPECIFICATION

- BLOW-OUT-PROOF STEM DESIGN
- VALVE DESIGN TO PER API 6D
- PRESSURE-TEMPERATURE TO PER ASME B16.34 RATINGS
- FACE TO FACE TO PER ASME B16.10
- FLANGE DIMENSIONS TO PER ASME B16.5
- SPLIT BODY TO PER BS5351
- LOCKING HANDLE WITH LEVER OR GO
- IN COMPLIANCE WITH NACE MR-0175
- ANTISTATIC GROUNDING BETWEEN BALL, STEM & BODY
- ISO 5211 ACTUATOR MOUNTING PAD
- FIRE TESTED TO PER API 6FA

PRESSURE TEMPERATURE RATINGS



D-LINE'S TWO-PIECE BALL VALVE HAS BEEN DESIGNED TO HANDLE EXTREME SERVICE APPLICATIONS WITH UNSURPASSED RELIABILITY. VALVE BODY MACHINED FROM SOLID WROUGHT MATERIAL PROVIDING MAXIMUM STRENGTH AND VIRTUALLY NO POROSITY. CHEM OIL'S BALL VALVE INTEGRATES THE PROVEN SEALING TECHNOLOGY AND THE DESIGN CAPABILITY TO TACKLE THE MOST DEMANDING APPLICATIONS.

FEATURES

- TOTAL ENCAPSULATED BODY SEALS.....
- WIDE TEMPERATURE AND PRESSURE RANGE
- ACTUATION FLANGE.....
- VARIETY OF SEATING MATERIALS.....
- CONDITIONS
- LIVE LOADED STEM.....
- INTEGRITY WITH A LOW OPERATING TORQUE
- API WALL THICKNESS.....
- FORGED BODY AND END.....
- FULLY TRACEABLE MATERIALS.....

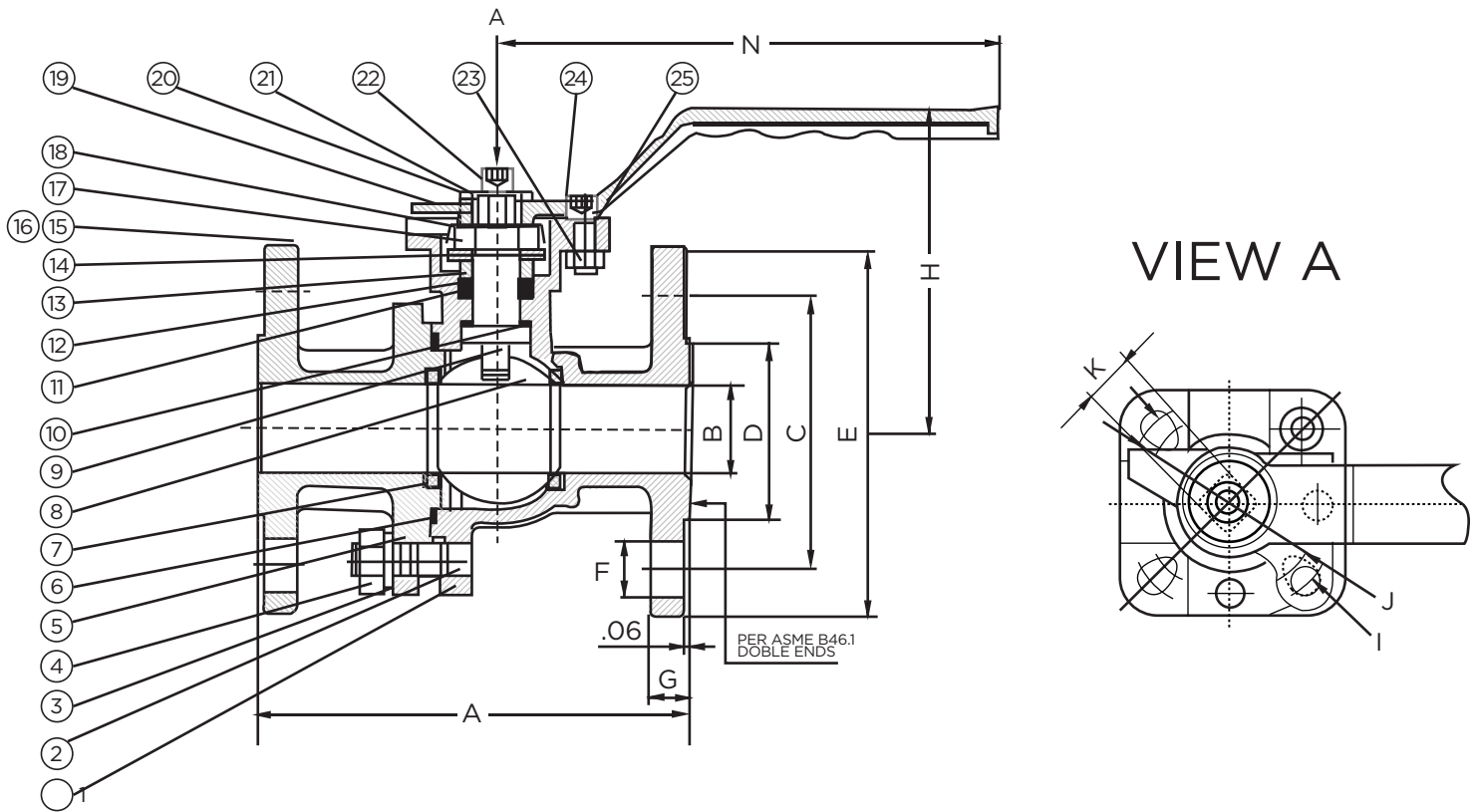
BENEFITS

- ELIMINATION OF COLD FLOW; HIGH PERFORMANCE OVER
- EASE OF AUTOMATION
- WIDE RANGE OF PROCESS MEDIA AND SERVICE
- PRESSURE AND TEMPERATURE RECOVERY, STEM SEAL
- EXTRA CORROSION ALLOWANCE FOR LONG LIFE
- HIGH INTEGRITY
- CERTIFICATION OF ALL PRESSURE RETAINING PARTS AVAILABLE FOR STRINGENT SPECIFICATION REQUIREMENTS

LOCKING PLATE:

AS PER OSHA REQUIREMENTS, CHEM OIL OFFERS A SIMPLE COST EFFECTIVE TEMPER PROOF LOCKING MECHANISM THAT CAN BE USED IN EITHER THE OPEN POSITION OR CLOSED POSITION. ONCE THE PADLOCK IS INSERTED, THE LOCK PLATE CANNOT BE REMOVED FROM THE VALVE EVEN IF THE HANDLE NUT IS REMOVED.

150 CLASS CARBON STEEL BODY 2 PC FP FLOATING BALL VALVE LEVER OPERATOR



MATERIAL LIST

1	BODY	ASTM A-216 Gr. WCB
2	BODY STUD	ASTM A-193 Gr. B7
3	SPRING WASHER	SPRING STEEL
4	BODY NUT	ASTM A-194 Gr. 2H
5	ADAPTER	ASTM A-216 Gr. WCB
6	BODY GASKETS	SS 304 + GRAPHITE
7	SEAT	PTFE + 15%GF
8	BALL	ASTM A-182 Gr. F316
9	STEM	ASTM A-276 Gr. 316
10	TRUST WASHER	PTFE
11	DOWN PACKING	PTFE
12	UP PACKING	PTFE
13	PACKING FOLLOWER	ASTM A-276 Gr. 420

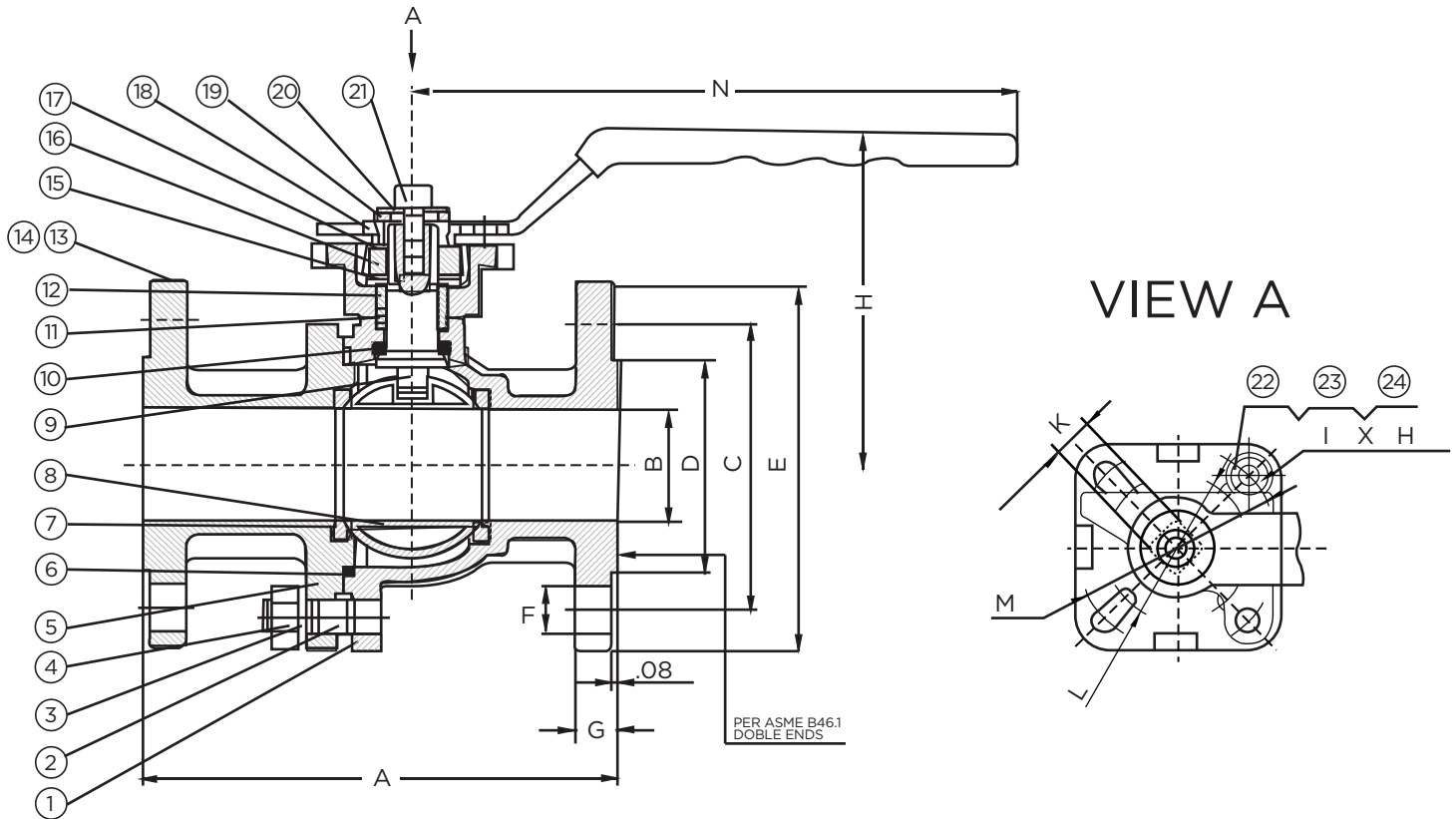
MATERIAL LIST

14	BOWL GASKET	SPRING STEEL
15	RIVETS	SS 304
16	NAME PLATE	SS 304
17	LOCKING NUT	CARBON STEEL
18	NUT SHIELD	CARBON STEEL
19	HANDLE	ASTM A-216 Gr. WCB
20	SPRING WASHER	SPRING STEEL
21	WASHER	CARBON STEEL
22	SCREW	CARBON STEEL
23	NUT	CARBON STEEL
24	WASHER	CARBON STEEL
25	STOP SCREW	CARBON STEEL

DIMENSIONS, WEIGHT & TORQUE

MODEL	SIZE	A	B	C	D	E	F	G	H	I	J	K	N	TORQUE (FT.LB)	WEIGHT (KG)
5112FF-06	1"	5.00	1.00	3.13	2.00	4.21	4-0.63	0.44	3.68	1.97	1.63	0.43	5.91	-	-

150 CLASS CARBON STEEL BODY 2 PC FP FLOATING BALL VALVE LEVER OPERATOR



MATERIAL LIST

1	BODY	ASTM A-216 Gr. WCB
2	BODY STUD	ASTM A-193 Gr. B7
3	SPRING WASHER	SPRING STEEL
4	BODY NUT	ASTM A-194 Gr. 2H
5	ADAPTER	ASTM A-216 Gr. WCB
6	BODY GASKETS	SS 304 + GRAPHITE
7	SEAT	PTFE + 15%GF
8	BALL	ASTM A-182 Gr. F316
9	STEM	ASTM A-276 Gr. 316
10	STEM GASKET	PTFE
11	STEM GASKET	PTFE
12	PACKING GLAND	ASTM A-276 Gr. 420

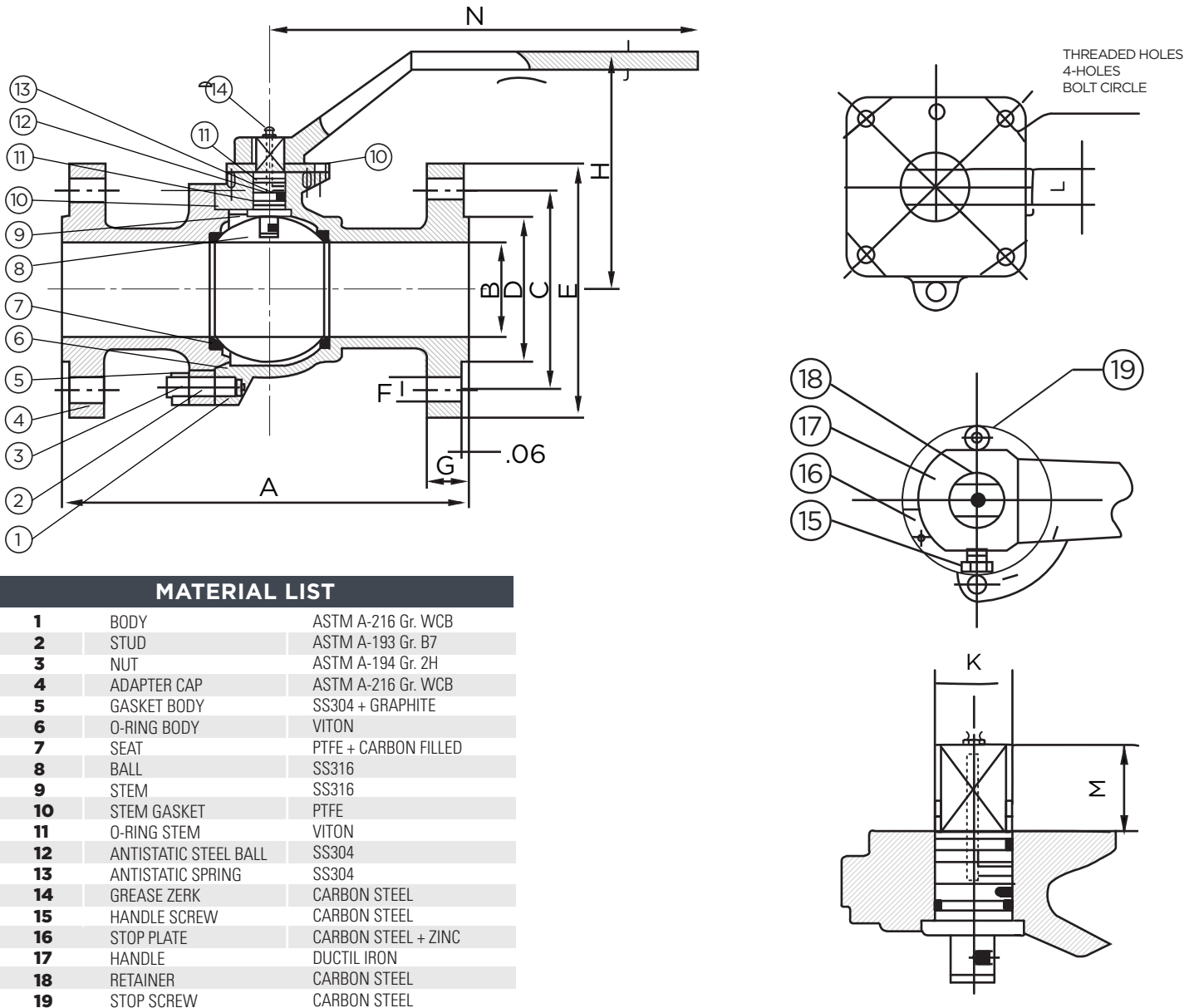
MATERIAL LIST

13	RIVETS	SS 304
14	NAME PLATE	SS 304
15	BOWL GASKET	SPRING STEEL
16	LOCKING NUTS	CARBON STEEL
17	NUT SHIELD	CARBON STEEL
18	HANDLE	ASTM A-216 Gr. WCB
19	SPRING WASHER	SPRING STEEL
20	WASHER	CARBON STEEL
21	HEXAGON SOCKET CAP SCREWS	CARBON STEEL
22	HEXAGON SOCKET CAP SCREWS	CARBON STEEL
23	NUT	CARBON STEEL
24	WASHER	CARBON STEEL

DIMENSIONS, WEIGHT & TORQUE

MODEL	SIZE	A	B	C	D	E	F	G	H	I	J	K	L	M	N	TORQUE (FT.LB)	WEIGHT (KG)
5112FF-08	1 1/2"	6.50	1.50	3.88	2.87	4.96	4-0.63	0.59	4.53	M8	0.78	0.55	1.97	2.76	8.19	-	-

150 CLASS CARBON STEEL BODY 2 PC FP FLOATING BALL VALVE LEVER OPERATOR



MATERIAL LIST

1	BODY	ASTM A-216 Gr. WCB
2	STUD	ASTM A-193 Gr. B7
3	NUT	ASTM A-194 Gr. 2H
4	ADAPTER CAP	ASTM A-216 Gr. WCB
5	GASKET BODY	SS304 + GRAPHITE
6	O-RING BODY	VITON
7	SEAT	PTFE + CARBON FILLED
8	BALL	SS316
9	STEM	SS316
10	STEM GASKET	PTFE
11	O-RING STEM	VITON
12	ANTISTATIC STEEL BALL	SS304
13	ANTISTATIC SPRING	SS304
14	GREASE ZERK	CARBON STEEL
15	HANDLE SCREW	CARBON STEEL
16	STOP PLATE	CARBON STEEL + ZINC
17	HANDLE	DUCTIL IRON
18	RETAINER	CARBON STEEL
19	STOP SCREW	CARBON STEEL

DIMENSIONS, WEIGHT & TORQUE

MODEL	SIZE	A	B	C	D	E	F	G	H	I	J	K	L	M	N	TORQUE (FT.LB)	WEIGHT (KG)
5112FF-09	2"	7.00	1.93	4.75	3.62	6.00	4-0.75	0.73	5.91	1/4-20	1.75	0.86	0.55	0.98	12.00	50.00	12.03
5112FF-10	2 1/2"	7.52	2.56	5.50	4.13	7.09	4-0.75	0.71	6.32	1/4-20	1.75	0.86	0.55	0.98	12.00	70.00	15.03
5112FF-11	3"	8.00	2.91	6.00	5.00	7.50	4-0.75	0.87	6.88	5/16-18	2.75	1.24	0.87	1.34	14.00	90.00	21.02
5112FF-12	4"	9.00	3.94	7.50	6.18	9.00	8-0.75	0.94	9.11	3/8-16	4.00	1.37	0.95	1.56	21.70	130.00	35.05
5112FF-13	5"	14.02	4.92	8.50	7.32	10.04	8-0.88	0.96	10.83	0.55	4.92	1.37	0.95	1.47	25.60	200.00	47.67
5112FF-14	6"	15.50	5.91	9.50	8.50	10.98	8-0.88	1.00	12.52	0.71	6.50	1.58	1.06	2.19	31.50	625.00	66.06
5112FF-15	8"	18.00	7.91	11.75	10.63	13.58	8-0.88	1.13	14.37	0.87	6.50	1.97	1.42	2.36	39.40	1000.00	100.11
5112FF-16	10"	20.98	9.92	14.25	12.76	15.94	12-1.02	1.20	16.34	0.87	6.50	1.97	1.42	2.36	76.60	1916.00	214.79

300 CLASS CARBON STEEL BODY 2 PC FP FLOATING BALL VALVE LEVER OPERATOR



FEATURES

SIZE:	2" - 8"
PORT:	FULL
CLASS:	300
TEMPERATURE:	-49 TO 500 F°
CONNECTION:	FLANGED RF

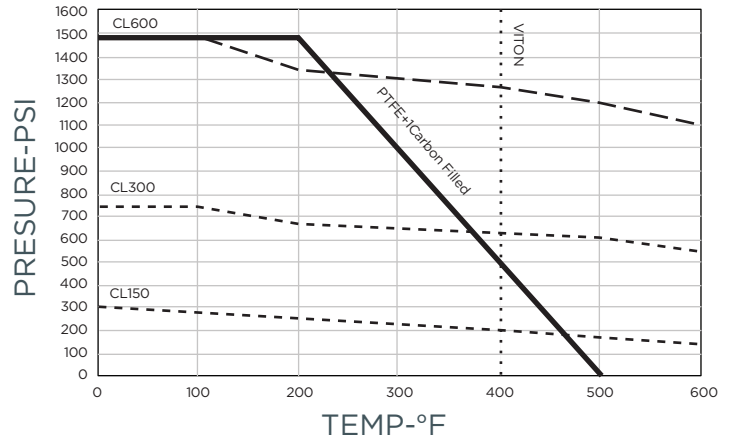
TEST SPECIFICATION

TEST ACCORDANCE TO PER	API 598
NOMINAL PRESSURE:	740 PSI
SHELL TEST (WATER):	1125 PSI
SEAT TEST (WATER):	815 PSI
AIR TEST:	80.80 PSI

TECHNICAL SPECIFICATION

- BLOW-OUT-PROOF STEM DESIGN
- VALVE DESIGN TO PER API 6D
- PRESSURE-TEMPERATURE TO PER ASME B16.34 RATINGS
- FACE TO FACE TO PER ASME B16.10
- FLANGE DIMENSIONS TO PER ASME B16.5
- SPLIT BODY TO PER BS5351
- LOCKING HANDLE WITH LEVER OR GO
- IN COMPLIANCE WITH NACE MR-0175
- ANTISTATIC GROUNDING BETWEEN BALL, STEM & BODY
- ISO 5211 ACTUATOR MOUNTING PAD
- FIRE TESTED TO PER API 6FA

PRESSURE TEMPERATURE RATINGS



D-LINE'S TWO-PIECE BALL VALVE HAS BEEN DESIGNED TO HANDLE EXTREME SERVICE APPLICATIONS WITH UNSURPASSED RELIABILITY. VALVE BODY MACHINED FROM SOLID WROUGHT MATERIAL PROVIDING MAXIMUM STRENGTH AND VIRTUALLY NO POROSITY. CHEM OIL'S BALL VALVE INTEGRATES THE PROVEN SEALING TECHNOLOGY AND THE DESIGN CAPABILITY TO TACKLE THE MOST DEMANDING APPLICATIONS.

FEATURES

- TOTAL ENCAPSULATED BODY SEALS.....
- WIDE TEMPERATURE AND PRESSURE RANGE
- ACTUATION FLANGE.....
- VARIETY OF SEATING MATERIALS.....
- CONDITIONS
- LIVE LOADED STEM.....
- INTEGRITY WITH A LOW OPERATING TORQUE
- API WALL THICKNESS.....
- FORGED BODY AND END.....
- FULLY TRACEABLE MATERIALS.....

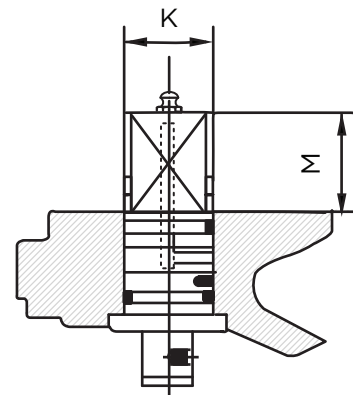
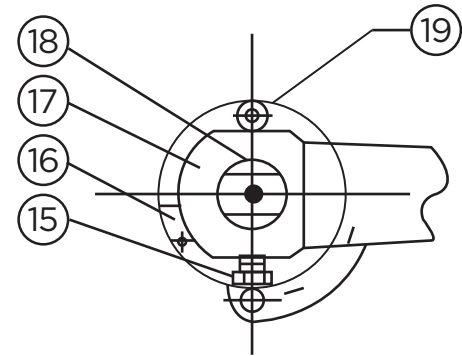
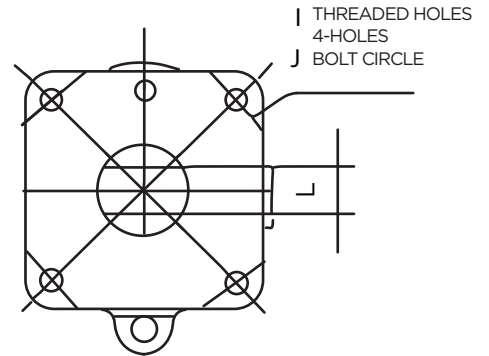
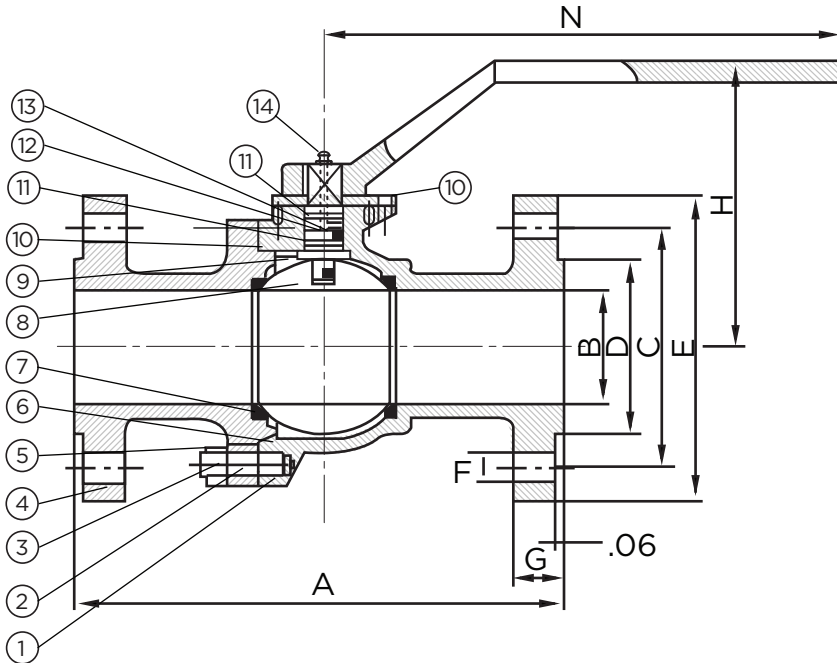
BENEFITS

- ELIMINATION OF COLD FLOW; HIGH PERFORMANCE OVER
- EASE OF AUTOMATION
- WIDE RANGE OF PROCESS MEDIA AND SERVICE
- PRESSURE AND TEMPERATURE RECOVERY, STEM SEAL
- EXTRA CORROSION ALLOWANCE FOR LONG LIFE
- HIGH INTEGRITY
- CERTIFICATION OF ALL PRESSURE RETAINING PARTS AVAILABLE FOR STRINGENT SPECIFICATION REQUIREMENTS

LOCKING PLATE:

AS PER OSHA REQUIREMENTS, CHEM OIL OFFERS A SIMPLE COST EFFECTIVE TEMPER PROOF LOCKING MECHANISM THAT CAN BE USED IN EITHER THE OPEN POSITION OR CLOSED POSITION. ONCE THE PADLOCK IS INSERTED, THE LOCK PLATE CANNOT BE REMOVED FROM THE VALVE EVEN IF THE HANDLE NUT IS REMOVED.

300 CLASS CARBON STEEL BODY 2 PC FP FLOATING BALL VALVE LEVER OPERATOR



MATERIAL LIST

ITEM NO.	DESCRIPTION	MATERIAL
1	BODY	ASTM A-216 Gr. WCB
2	STUD	ASTM A-193 Gr. B7
3	NUT	ASTM A-194 Gr. 2H
4	ADAPTER CAP	ASTM A-216 Gr. WCB
5	GASKET BODY	SS304 + GRAPHITE
6	O-RING BODY	VITON
7	SEAT	PTFE + CARBON FILLED
8	BALL	SS316
9	STEM	SS316
10	STEM GASKET	PTFE
11	O-RING STEM	VITON
12	ANTISTATIC STEEL BALL	SS304
13	ANTISTATIC SPRING	SS304
14	GREASE ZERK	CARBON STEEL
15	HANDLE SCREW	CARBON STEEL
16	STOP PLATE	CARBON STEEL + ZINC
17	HANDLE	DUCTIL IRON
18	RETAINER	CARBON STEEL
19	STOP SCREW	CARBON STEEL

DIMENSIONS, WEIGHT & TORQUE

MODEL	SIZE	A	B	C	D	E	F	G	H	I	J	K	L	M	N	TORQUE (FT.LB)	WEIGHT (KG)
5312FF-09	2"	8.50	1.93	5.00	3.62	6.50	8-0.75	0.88	5.91	1/4-20	1.75	0.87	0.55	0.98	12.00	60.00	15.03
5312FF-10	2 1/2"	9.50	2.56	5.87	4.13	7.48	8-0.88	1.02	6.32	1/4-20	1.75	0.86	0.55	0.98	12.00	110.00	19.52
5312FF-11	3"	11.14	2.91	6.63	5.00	8.27	8-0.87	1.13	6.88	5/16-18	2.75	1.24	0.87	1.34	20.00	140.00	32.00
5312FF-12	4"	12.01	3.94	7.87	6.18	10.00	8-0.87	1.25	9.11	3/8-16	4.00	1.37	0.95	1.56	21.70	180.00	48.03
5312FF-14	6"	15.87	5.91	10.63	8.50	12.52	12-0.88	1.44	12.52	0.71	6.50	1.58	1.06	2.19	31.50	1000.00	87.08
5312FF-15	8"	19.76	7.91	13.00	10.63	14.96	12-1.02	1.64	14.37	0.87	6.50	1.97	1.42	2.36	56.90	2250.00	145.14

600 CLASS CARBON STEEL BODY 2 PC FP FLOATING BALL VALVE LEVER OPERATOR



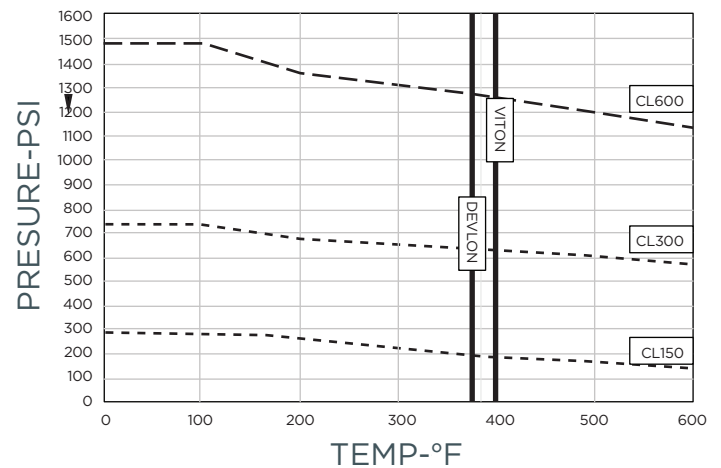
FEATURES	
SIZE:	1" - 4"
PORT:	FULL
CLASS:	600
TEMPERATURE:	-18 TO 392 F°
CONNECTION:	FLANGED RF

TEST SPECIFICATION	
TEST ACCORDANCE TO PER API 598	
NOMINAL PRESSURE: 1480 PSI	
SHELL TEST (WATER): 2225 PSI	
SEAT TEST (WATER): 1630 PSI	
AIR TEST: 80.80 PSI	

TECHNICAL SPECIFICATION

- BLOW-OUT-PROOF STEM DESIGN
- VALVE DESIGN TO PER API 6D
- PRESSURE-TEMPERATURE TO PER ASME B16.34 RATINGS
- FACE TO FACE TO PER ASME B16.10
- FLANGE DIMENSIONS TO PER ASME B16.5
- SPLIT BODY TO PER BS5351
- LOCKING HANDLE WITH LEVER OR GO
- IN COMPLIANCE WITH NACE MR-0175
- ANTISTATIC GROUNDING BETWEEN BALL, STEM & BODY
- ISO 5211 ACTUATOR MOUNTING PAD
- FIRE TESTED TO PER API 6FA

PRESSURE TEMPERATURE RATINGS



D-LINE'S TWO-PIECE BALL VALVE HAS BEEN DESIGNED TO HANDLE EXTREME SERVICE APPLICATIONS WITH UNSURPASSED RELIABILITY. VALVE BODY MACHINED FROM SOLID WROUGHT MATERIAL PROVIDING MAXIMUM STRENGTH AND VIRTUALLY NO POROSITY. CHEM OIL'S BALL VALVE INTEGRATES THE PROVEN SEALING TECHNOLOGY AND THE DESIGN CAPABILITY TO TACKLE THE MOST DEMANDING APPLICATIONS.

FEATURES

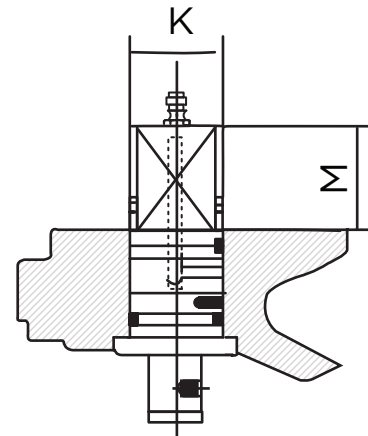
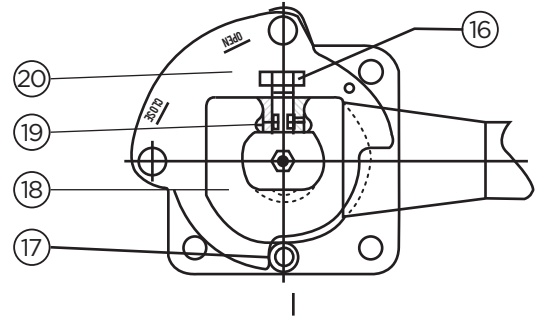
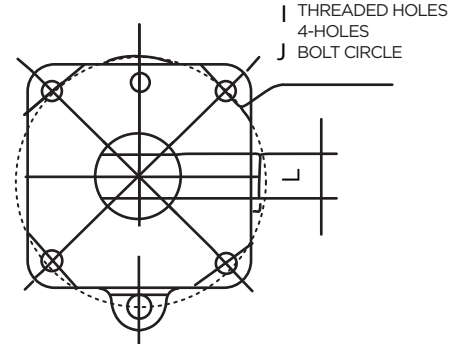
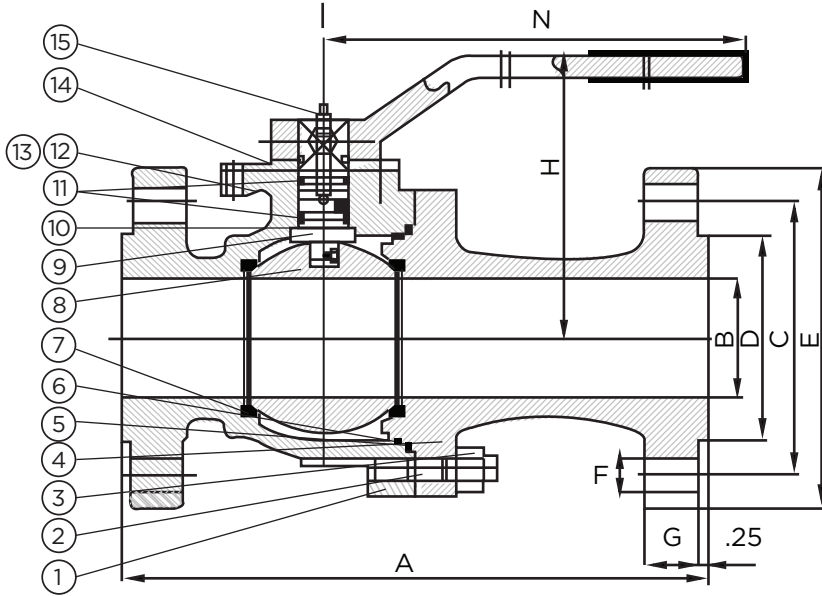
BENEFITS

- | | |
|---------------------------------------|---|
| • TOTAL ENCAPSULATED BODY SEALS..... | ELIMINATION OF COLD FLOW; HIGH PERFORMANCE OVER |
| WIDE TEMPERATURE AND PRESSURE RANGE | |
| • ACTUATION FLANGE..... | EASE OF AUTOMATION |
| • VARIETY OF SEATING MATERIALS..... | WIDE RANGE OF PROCESS MEDIA AND SERVICE |
| CONDITIONS | |
| • LIVE LOADED STEM..... | PRESSURE AND TEMPERATURE RECOVERY, STEM SEAL |
| INTEGRITY WITH A LOW OPERATING TORQUE | |
| • API WALL THICKNESS..... | EXTRA CORROSION ALLOWANCE FOR LONG LIFE |
| • FORGED BODY AND END..... | HIGH INTEGRITY |
| • FULLY TRACEABLE MATERIALS..... | CERTIFICATION OF ALL PRESSURE RETAINING PARTS AVAILABLE FOR |
| | STRINGENT SPECIFICATION REQUIREMENTS |

LOCKING PLATE:

AS PER OSHA REQUIREMENTS, CHEM OIL OFFERS A SIMPLE COST EFFECTIVE TEMPER PROOF LOCKING MECHANISM THAT CAN BE USED IN EITHER THE OPEN POSITION OR CLOSED POSITION. ONCE THE PADLOCK IS INSERTED, THE LOCK PLATE CANNOT BE REMOVED FROM THE VALVE EVEN IF THE HANDLE NUT IS REMOVED.

600 CLASS CARBON STEEL BODY 2 PC FP FLOATING BALL VALVE LEVER OPERATOR



MATERIAL LIST

NO.	DESCRIPTION	MATERIAL
1	BODY	ASTM A-216 Gr. WCB
2	STUD	ASTM A-193 Gr. B7
3	NUT	ASTM A-194 Gr. 2H
4	ADAPTER CAP	ASTM A-216 Gr. WCB
5	GASKET BODY	SS304 + GRAPHITE
6	O-RING BODY	VITON
7	SEAT	DEVLON
8	BALL	SS316
9	STEM	SS316
10	STEM GASKET	PTFE
11	O-RING STEM	VITON
12	ANTISTATIC SPRING	SS304
13	ANTISTATIC STEEL BALL	SS304
14	GASKET	PTFE
15	GREASE ZERK	CARBON STEEL
16	HANDLE SCREW	CARBON STEEL
17	STOP SCREW	CARBON STEEL
18	HANDLE	DUCTILE IRON
19	SNAP RING	SPRING STEEL
20	STOP PLATE	CARBON STEEL + ZINC

DIMENSIONS, WEIGHT & TORQUE

MODEL	SIZE	A	B	C	D	E	F	G	H	I	J	K	L	M	N	TORQUE (FT.LB)	WEIGHT (KG)
5612FF-06	1"	8.50	1.00	3.50	2.00	4.87	4-0.75	0.71	4.27	M6	1.80	0.63	0.37	0.95	6.22	25.00	7.26
5612FF-09	2"	11.50	1.93	2.00	3.63	6.50	8-0.75	1.00	5.91	1/4-20	1.75	0.87	0.55	0.98	12.00	100.00	20.11
5612FF-11	3"	14.00	2.91	6.64	5.00	8.27	8-0.88	1.25	6.88	3/8-16	4.00	1.24	0.87	1.34	20.00	180.00	39.50
5612FF-12	4"	17.00	3.94	8.50	6.18	10.75	8-1.00	1.50	9.11	3/8-16	4.24	1.37	0.95	1.56	31.50	240.00	72.05